

SAS storms Bondi Beach



An Integrated Approach To Water & Waste Water Treatment




SAS
Water Solutions

Water & Waste Water Treatment Specialists

- Provide solutions into the Municipal, Industrial & Commercial markets
- Integrated Chemical, Mechanical and Biological water treatment solutions

Core Business

- Water Treatment Service Providers (WTSP)
- Engineering Projects
- Engineering Service & Operations
- Chemicals & Services



SAS
Business Solutions

Shared & Consultancy Services

- Administer & Facilitate Operations
- Human Resource Services
- Finance Services
- Information Technology Services
- Consultancy Services
- Labour Hire Services



SAS
Facilities Solutions

Integrated Facility And Project Management Services

- Capital improvement works through Building and Renovation projects
- Essential Service Compliance Management
- Programmed & Reactive engineering and building property maintenance
- Trade Services, Electrical, Plumbing, Carpentry, Painting, and general building maintenance
- Grounds & Gardens



INTRODUCTION

ABOUT SAS WATER SOLUTIONS

SAS Water Solutions, previously known as Stephenson Chemicals/Stephenson Applied Services has been in business since 1980.

We are a 100% Australian owned & operated company with strategic alliances that allow us to tap into the latest Water & Wastewater treatment technology from around the globe.

Our Head Office is located in Castle Hill, Sydney and we have offices in Newcastle, Wollongong, Riverina Region, Canberra, Melbourne and Brisbane.

THE INDUSTRIES WE WORK WITH

SAS Water Solutions has specialised experience with the following industries:

- Building Management Services
- Food and Beverage - Breweries, Wineries, Dairies & Abattoirs
- Manufacturing & Construction
- Local Government & Municipal Councils
- Pharmaceutical & Healthcare
- Power Generation
- Pulp, Paper & Packaging
- Mining, Oil & Gas
- Parks & Wildlife Services
- Defence and Military
- Hotels & Resorts
- Hospitals & Schools
- Builders & Developers

WHAT WE STAND FOR

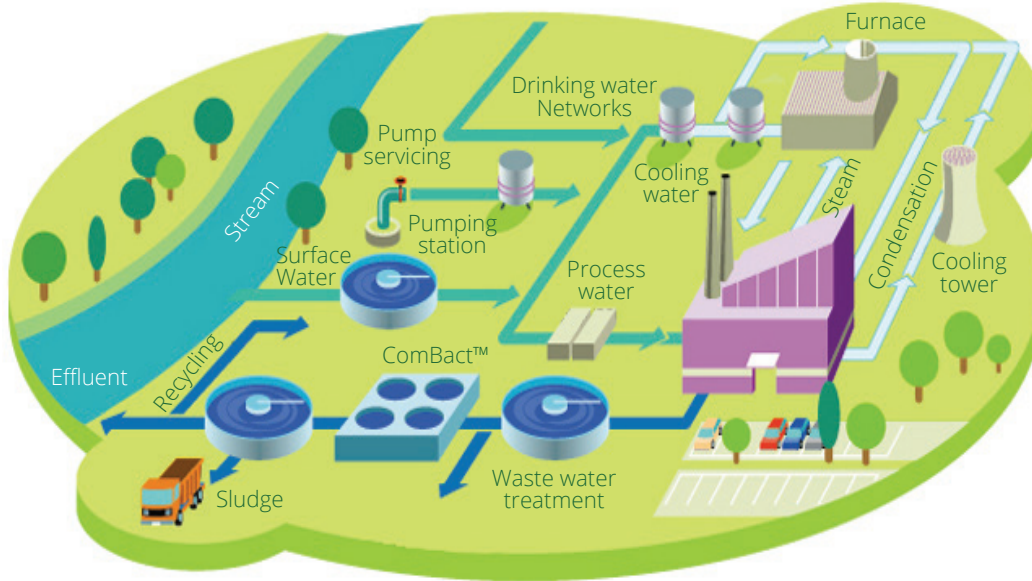
At SAS Water, our aim is to exceed customer expectations and partnering with them in order to:

- Maximize Customer Satisfaction
- Maximise Plant Productivity
- Maximize Return on Investment
- Minimize Operational Risk
- Minimize Environmental Impact
- Minimize Operational Expenditure

INDEPENDENT THIRD PARTY QUALITY COMPLIANCE

- AS/NZS ISO9001:2008 Quality Management Systems
- AS/NZS ISO14001: 2004 Environmental Management Systems
- AS/NZS 4360: 2004 Risk Management Systems
- AS/NZS 4801: 2001 OH&S Management Systems





Innovative Solutions for Water & Waste Water

SAS Water provides a range of process technologies & solutions to suit applications ranging from Potable water, Sewage water, Re-use water, Wash water, Storm water, Ultra pure water, High purity water, Demineralised water, Leachate treatment, Process water, Sewer mining to Irrigation water.

Processes & Technologies include:

- Reverse Osmosis
- Nanofiltration
- Ultrafiltration
- Microfiltration
- Ion Exchange
- Clarification
- Carbon Absorption
- Ozonation
- Stormwater Harvesting
- Biological
- Warm water disinfection
- Screen Filtration
- Multimedia Filtration
- Softening
- UV technology
- Pump Stations
- Chemical monitoring/dosing systems
- Sewage treatment
- Reticulations Systems
- Irrigation System
- Water Re-use
- Water Recycling
- Effluent Re-use
- Potable water system
- Oil water separators
- Dissolved Air Flotation
- Biological Treatment
- Membrane Bio-Reactors
- ComBact™
- Universal Advanced Bio-Reactor
- Containerised Systems

Containerised Water Treatment Systems



SAS Water Solutions builds fully containerised Water & Waste water treatment systems for treating bore water, town water, river & sea water, storm water and waste water streams.

The systems are fully designed, built, tested and assembled in our factory with provisions for remote access telemetry for operations & maintenance.

Applications of containerised water treatment systems include;

- Potable Water Treatment
- Wastewater Treatment
- Chemical Dosing
- Mining camps
- Military camps
- Construction camps
- Nomadic Encampments
- Remote areas (air access or boat access only)
- Environmental Emergencies
- Excavation Sites
- Temporary Water Supplies
- Spill remedial treatment
- Soil Remediation Sites

ComBact™

SAS Water Solutions offers ComBact™ as a unique Bacteria treatment solution. Bacteria are nature's recyclers and have the ability to degrade a range of compounds. "ComBact™" is our range of formulated complex bacteria designed to reduce organic and inorganic waste.

ComBact™ bacterial strains are introduced into the waste streams wherein they react with the local biological environment to breakdown the waste.

Main benefits include:

- Sludge reduction
- Significant reductions in TOC, BOD, TSS, TDS, Odours, N&P, FOG in order to meet EHS standards
- Up to 80% reduction in chemical costs

Water Recycle System



Our Universal Advanced Bio-Reactor (UAB) is a skid mounted, fully enclosed, multi stage water treatment recycle systems incorporating oil water separation technology, biological treatment, clarification and disinfection.

It is ideal for golf courses, turf farms and vehicle washing.



Note: Taken from viewing platform



Note: Looking at viewing platform

A few special features include plug and play operation, low operating & maintenance, small footprint and non corrosive materials of construction. Additional options include chemical or microbial additions and customised installation to suit existing sites.

Water Treatment Service Providers

All of our Technicians are trained, certified and armed with equipment & knowledge to eliminate risk.

SAS Water Solutions provide treatment services for HVAC systems, Cooling towers, Boilers, Steam Generation systems, Potable and Warm water systems, Hydrotherapy pools, Ground water, Surface water, Ponds & Fountains to meet relevant guidelines including Australia & NZ guidelines for fresh and marine water quality (ANZECC), Australian Drinking Water Guidelines (ADWG), Australian Standards, EPA requirements and/or local Council requirements and other water treatment guidelines.

A comprehensive range of services include;

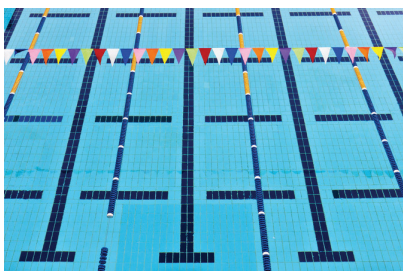
- Program assurance and on-site testing
- Cleaning and Disinfection
- Laboratory Testing
- Preventative Maintenance
- Pathogen Risk Management
- HSE Customer Assessment
- Water Audits

SAS Water manages health related risks associated with waterborne pathogens and water quality issues including:

- Legionella pneumophila
- Escherichia coli
- Heterotrophic Plate Count
- Pseudomonas Aeruginosa
- Faecal Coliforms
- Various other virus, pathogens and protozoa's

We also provide technical support and consultancy and on-site support for the following;

- Raw water clarification
- Chemical optimisation
- Disinfection
- Scale and Corrosion control
- Microbiological control
- Water conservation and reuse expertise
- Wash aids
- Foam control
- Thermal processing
- Waste water reclamation
- Effluent discharge and reuse
- Odour control
- Lagoon and digester optimisation



Specialty Chemicals

SAS Water has a range of specialty chemicals and Clean In Place (CIP) chemicals to suit your industrial application needs.

Specialty Chemicals

Our range of specialty chemical products are designed to suit site specific requirements. We also hold stock in our warehouse for inventory management and control;

- pH Correction (Acid & Alkali Blends)
- Coagulants
- Flocculants
- Biocides
- Polymers
- Dust suppressants
- And many others;

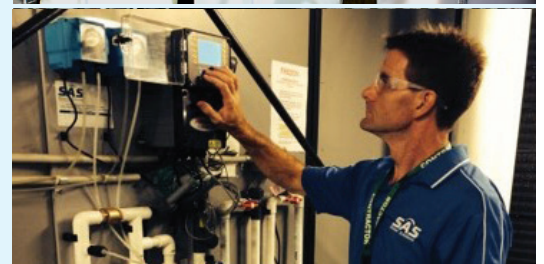
Cleaning and Disinfection

All water systems require cleaning and disinfection. This being hazardous work must be carried out with minimum disruption to the customers' operation. Personnel carrying out the works, risk exposure to pathogenic and toxic materials. Other risks include working in confined spaces and cleaning at elevated heights.

SAS has comprehensive procedures in place to ensure that this work is effective and non disruptive to the operations of the plant.

CIP Chemicals include:

- Alkaline Chlorinated Foams
- Disinfectants
- Alkaline detergents
- Acidic rinses & detergents
- Scale Inhibitors
- Corrosion Inhibitors
- Dispersants
- De-foamers
- Membrane cleaners
- Resin disinfectants
- Resin cleaners
- And many others;



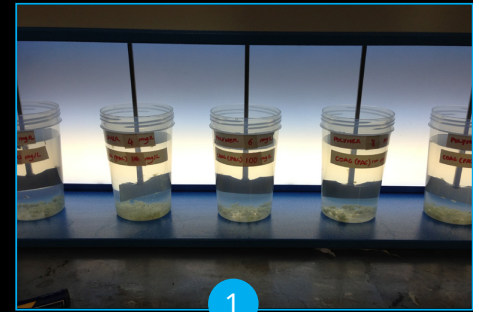
Design, Engineer & Deliver

From small skid mounted units to large engineered systems, SAS Water Solutions provides complete solutions for plant & equipment.

Our design incorporates the latest technologies for delivering optimal results.

Our capabilities include:

- Consultancy
- Bench, Pilot & Field Trials
- Laboratory analysis, testing & reporting
- Design & Engineering
- Project Management
- Drawings & Documentation
- Installation
- On-site fabrication
- Commissioning
- System servicing
- Ongoing maintenance & operation
- Back to Base monitoring and alarms
- Call out services
- Operator Training



1

Trial



4

Build

Operations & Services

SAS Water Solutions has a dedicated Engineering Service & Operations division. The key functions include:

- 1) Scheduled Planned Maintenance of Systems
- 2) Reactive Servicing & Urgent Repairs
- 3) System Upgrades & Process Modifications
- 4) Project Management, Installation & Commissioning

Systems serviced & maintained include :

- MF, UF, NF and RO systems
- Water Softening and Carbon Absorption systems
- Demineralisation Plants
- Potable and Waste Water Treatment Systems
- Sewage Treatment Plants
- UV and Ozonation units
- Media and Screen Filtration units
- Chemical Dosing Systems
- Irrigation and Industrial Pumping Systems

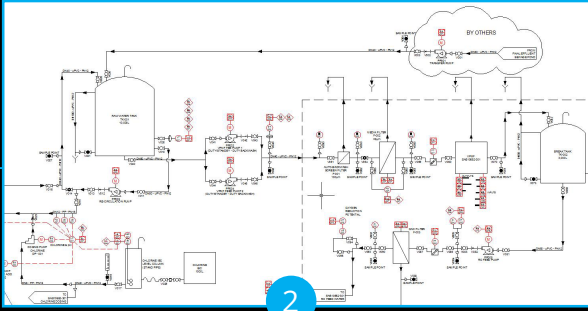
Our service technicians are trade qualified and able to offer mechanical, hydraulic, electrical and process support. SAS Water have a range of fully equipped service vehicles with fully equipped workshop dedicated to holding spare equipment.

We also provide remote plant monitoring & control along with 24/7 emergency assistance.

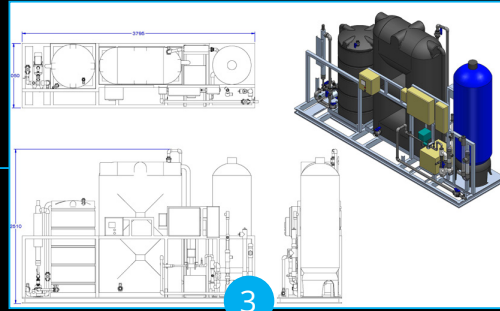


Evolution of Project

09



Concept



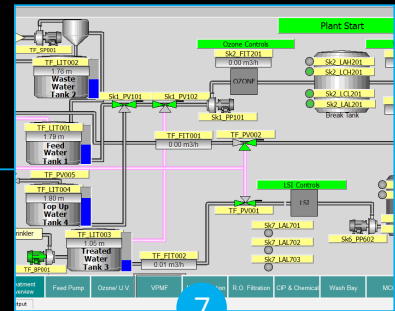
Design & Engineering



Installation



Commission



Operation



Reference

POTABLE WATER

Wollongong Council - Bulli
Tops

Grange Resources - TAS

Great Aussie Bush Camp

NSW National Parks

Mangrove Mountain

STORM WATER

RMT Energi Metals

Waverley Council -
Bondi Beach

Waverley Council -
Bronte Beach

Lipman Constructions -
Wet & Wild Sydney

BORE WATER

Kooindah Waters Golf Club

St George Leagues Club

Waverley Council -
Waverly Oval

Waverley Council -
Barracuff Oval

WASTE WATER

Rheem Australia

RAAF Amberley:
Component Washbay -
QLD

Rauxel

Bindaree Beef

Nationwide News

Hannanprint

Rallyspeed

AP Foods

Visy Packaging

Redbank Power

Mosman Sugar Mill - QLD

SEWAGE WATER

Scalabrini Age Care

Twin Creeks

St Gregory's College

Northern Beaches Christian
School

Durham Green

LEACHATE WATER

EnviroPacific Solutions

Orica Villawood

Wagga Wagga Gas works

Southern Rail Diversion

RECYCLED WATER

RAAF Amberley: ASH
Washbay - QLD

Inghams Enterprises:
Lisarow - Cooling Tower
Water

Melbourne Olympic Park -
AAMI Stadium

Melbourne Olympic Park -
Rod Laver Arena

Kurri Kurri TAFE

Coffs Harbour Golf Club

Energy Australia Truck
Wash

Brimbank Council Truck
Wash

Hume Concrete

Georges Heights Tank
Cleaning



PROCESS WATER	WATER TREATMENT SERVICE PROVIDER		
Webstar	SYDNEY & WESTERN NSW	SOUTH SYDNEY & ILLAWARRA	ACT/RIVERINA
Westmead Hospital			Royal Australian Mint
Inghams Enterprises	Goodman	Illawarra Hospital's	National Portrait Gallery
Nationwide News	Westmead Hospital	St George Leagues Club	Canberra Airport Terminal
Offset Alpine Printing	Blacktown Hospital	PAX Australia	University of Canberra
Cowra Meat Processors	Nepean Hospital	Nationwide News	ADFA - Duntroon
Nowra Chemicals	Hornsby Hospital	Illawarra TAFE's	Department of Defence
ALSCO Linen	Royal North Shore Hospital	ANSTO	Lakeside Leisure Centre
Manildra Flour Mills	Panthers Penrith	NORTHERN NSW	Canberra Olympic Pool
Moolarben Coal	Bennelong Apartments		Real Juice Company
Hakka Foods	Darrell Lea	Inghams Enterprises	Nugan Estate Wines
Goulburn Hospital	Sydney Trains & Transport	Crown Plaza (IHG)	National Archives of Australia
PAX Australia	Alwyn Hydro Pool	Murrays Brewery	Calvary John James Hospital
Murrays Craft Brewery	Valstryene Orange	Hope Estate	Queanbeyan Leagues Club
National Portrait Gallery	Australian Plastic Profiles	Delta Labs	Therapeutic Goods Administration
Therapeutic Goods	PPG, Arctural Coatings	Magenta Shores Golf Club	Eurobodalla Stock Feeds
Rural Press	Millennium Institute	Kooindah Waters Golf Club	Malaysian High Commission
VISY Beverages	Masada College	Gosford Council	
BlueScope Steel	Pink Penguin Ice Dubbo	Lovedale Brewery	
	Castle Towers & Mall		Snowy Hydro Cooma





SYDNEY OFFICE (Head Office)

30/9 Salisbury Rd, Castle Hill NSW 2154

Phone: 02 9620 4900 | Fax: 02 9620 4388

email: sales@saswater.com.au or orders@saswater.com.au

ACT OFFICE

Unit 1, 10-12 Kemble Court Mitchell, ACT 2911

Phone: 02 6108 4799 | Fax: 02 6259 8306

VIC OFFICE

P.O. Box 2493, Caulfield Junction VIC 3161

Phone: 0402 452807 or 0413 709925

www.saswater.com.au

MEMBERS OF



PROUD CORPORATE PARTNERS WITH MANLY WARRINGAH SEA EAGLES,
PARRAMATTA EELS & CANBERRA RAIDERS

